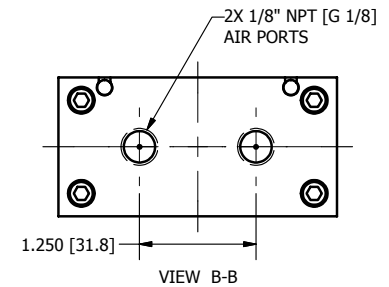
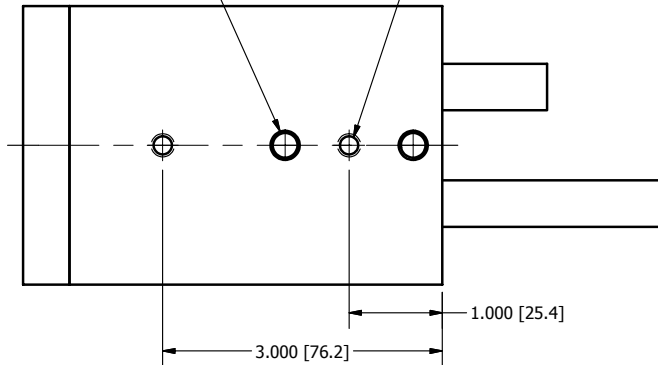


2X  $\varnothing 17/64$  [ $\varnothing 6.5$ ] DRILL THRU  
 $\varnothing 5/16 \nabla 0.37$  [ $\varnothing 8 \nabla 9.5$ ]  
SF DOWEL HOLES

2X TAP 1/4-20  $\nabla 0.50$   
[M6x1.0  $\nabla 12.7$ ]

FINGER SIDE MOUNT STANDARD  
(-R OPTION) FINGER TOP MOUNT



**DURA-SCAPE**  
**BC-6B**